

Providing Exceptional  
NHS Eye Care Services Since 2005

**ACES**

## NHS Services We Provide\*



Pre-op & Post-op  
Cataract Care



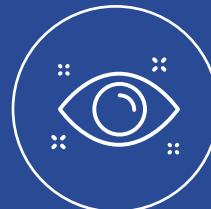
Cataract  
Surgery



YAG Laser  
Treatment



Glaucoma



Oculoplastics  
Surgery



General  
Ophthalmology

\*Services provided dependent on location

## Easy Referral Pathway For All NHS Patients

### Optometrist Referral



We advise you to follow your local referral pathway. ACES accepts referrals via the following:

- **Opera** - Select ACES from the provider list
- **Direct** - Email [aces.referrals1@nhs.net](mailto:aces.referrals1@nhs.net)

### GP Referral



All healthcare professionals referring NHS patients to ACES should use the NHS e-Referral Service in the first instance.

- **e-RS** – Select ACES from the provider list

24/7 Practitioner and Post-Operative Advice Line:

**0333 188 2938** Monday to Saturday between 9am-5pm

**03300 240 488** outside normal operating hours.

## NHS Partnership Executives

If you would like to hear more about our services and how we can support you and your practice in providing excellent care to your patients, please contact your local NHS Partnership Executive:

**[communications@aces-eyeclinic.co.uk](mailto:communications@aces-eyeclinic.co.uk)**



# ACES Birmingham Clinic

16 Corporation Street, Birmingham, B2 4RN

Pre-op & Post-op Cataract Care | Cataract Surgery | YAG Laser Treatment



**Directions:** ACES is located within Optical Express in Birmingham City Centre on Corporation Street, opposite of Coventry Building Society and next to Superdrug.

**Parking:** Car Parking spaces are available on Grand Central, Hill Street and Queens Drive. 24/7 paid parking available in Britannia, Birmingham Grand Central Car Park or (5-min walk) or the NCP Birmingham High Street (5-min walk) or at the APCOA Parking at New Street Station (5-min walk).

**By Train:** The nearest train station is Birmingham New Street (3-min walk) coming through Stephenson Street. An alternative train station is Birmingham Snow Hill (8-min walk) via Colmore Row, walking across St Peter's Cathedral.

**By Tram:** There is a tram stop directly outside the clinic named "Corporation Street". See [www.westmidlandsmetro.com](http://www.westmidlandsmetro.com) for the tram timetable.

## What Our Patients Say About ACES



**99.4%**

would recommend ACES vision correction surgery to their friends and family.\*



**98.6%**

were satisfied with their care.\*



**97.8%**

were satisfied or very satisfied with their overall experience at ACES.\*



**91.2%**

said their quality of life has improved since having surgery.\*

[www.aces-eyeclinic.co.uk](http://www.aces-eyeclinic.co.uk)

0333 188 2937 | [aceseyeclinic.enquiries@nhs.net](mailto:aceseyeclinic.enquiries@nhs.net)

**ACES**

Providing NHS patients with choice when it comes to their eye care.

**NHS**

\*2023 ACES Telemedicine Post-Op Questionnaire and External Optometrist Feedback form. Dates between 1st January to 3rd of September 2023. Sample size 3,776.